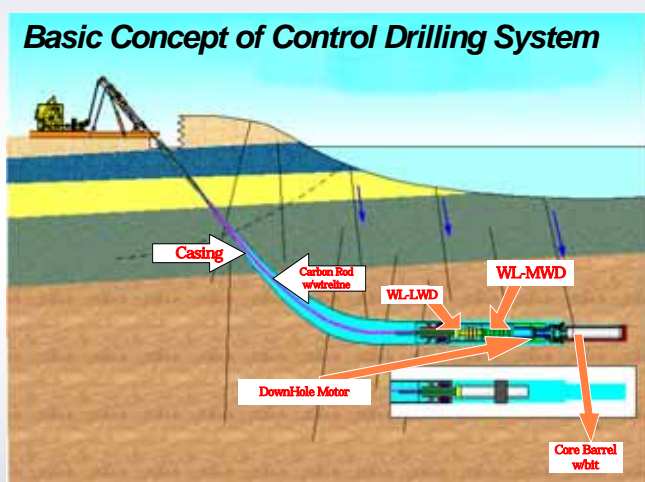
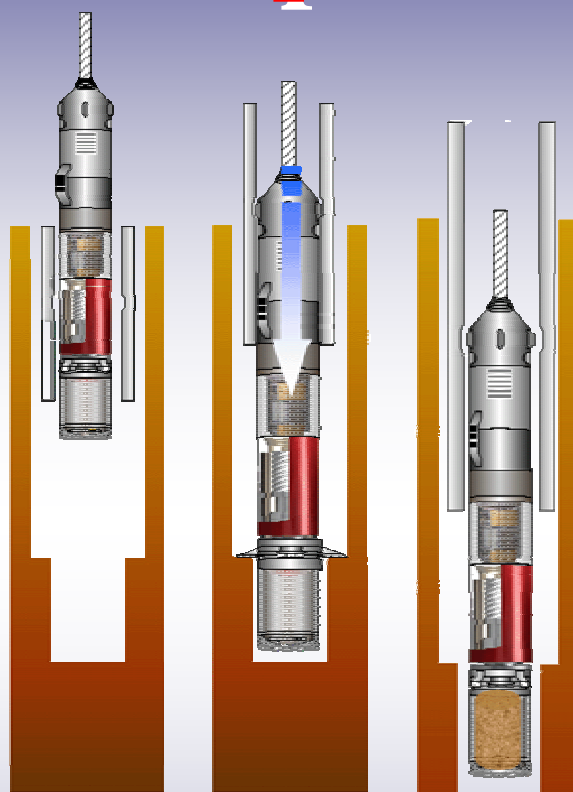


# The 13<sup>th</sup> Formation Evaluation Symposium of Japan



(from Kiho *et al.*, the BEST PAPER of JFES2006)



Run in hole by wireline and latch to casing

Pump to open the hole opener and rotate PDM

Commence drilling and coring with WL-MWD

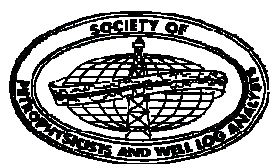
**TRC-JOGMEC, Chiba**  
**September 27 - 28, 2007**

Sponsored by Japan Formation Evaluation Society  
Cosponsored by Technology Research Center, Japan Oil, Gas and Metals National Corporation (JOGMEC-TRC)  
Supported by Japanese Association for Petroleum Technology  
Society of Exploration Geophysicist of Japan  
Geothermal Research Society of Japan  
Society of Petroleum Engineers, Japan Section



<http://www.geocities.jp/ymmiya/index.htm>





## The 13th Formation Evaluation Symposium of Japan JOGMEC-TRC, Chiba September 27-28, 2007

### CALL FOR ABSTRACTS

- Sponsored** by Japan Formation Evaluation Society  
**Cosponsored** by Technology Research Center, Japan Oil, Gas and Metals National Corporation (JOGMEC-TRC)  
**Supported** by Japanese Association for Petroleum Technology  
Society of Exploration Geophysicist of Japan  
Geothermal Research Society of Japan  
Society of Petroleum Engineers, Japan Section

The 13th Formation Evaluation Symposium of Japan will be held at Japan Oil, Gas and Metals National Corporation (JOGMEC) - Technology Research Center, Chiba on September 27-28, 2007. All persons involved with oil, gas, geothermal and geo-engineering industry and scientific drillings are invited to submit abstracts of papers for presentation at the symposium. The symposium will cover Scientific Drilling, General Formation Evaluation, Reservoir Characterization, Fractured Reservoir, New Tool/ New Technology, Well Test / Production Logging, Methane Hydrate and Geophysical Applications. In addition to these general sessions, a special session "Borehole Imaging" will be featured this year.

**NOTE TO AUTHORS:** Complete attached application form and submit with abstract containing 200 to 400 words in English by **e-mail**. Notification of acceptance will be made by **the end of June, 2007**. If accepted, a complete manuscript or extended abstract in English will be required for the proceedings by **July 31, 2007**.

**ABSTRACT IS DUE NO LATER THAN JUNE 15, 2007**

Submission Form: <http://www.geocities.jp/ymmiya/index.htm>

Submit abstracts to: Kazuhiko Tezuka (Vice President of Technology, JFES)  
JAPEX Research Center

Telephone: +81(43)275-9311

Fax: +81(43)275-9316

e-mail: [kazuhiko.tezuka@japex.co.jp](mailto:kazuhiko.tezuka@japex.co.jp)