

The 20th Formation Evaluation Symposium of Japan

Special Session: Unconventional

PROGRAM

**JOGMEC-TRC, Chiba
October 1 - 2, 2014**



Sponsored by Japan Formation Evaluation Society – A Chapter of SPWLA
Cosponsored by Technology & Research Center, Japan Oil, Gas and Metals
National Corporation
Supported by Japanese Association for Petroleum Technology
Society of Exploration Geophysicist of Japan
Geothermal Research Society of Japan
Society of Petroleum Engineers, Japan Section

<http://www.geocities.jp/yymmiva/index.htm>

Sponsor

Gold

JAPEX **INPEX**

CTC **MOECO**
Challenging Tomorrow's Changes

JX **JX日鉱日石開発** **Schlumberger**

Apache
EXPLORING WHAT'S POSSIBLE

Silver

GERD

Mitsubishi Corporation Exploration

GSC

JGI

FUGRO

Program

Wednesday, October 1

<i>Registration</i>	Entrance Hall
<i>Slide Center</i>	Entrance Hall
Opening Session	Lecture Hall
Special Session : Unconventional 1	Lecture Hall
<i>Lunch</i>	Cafeteria
Special Session : Unconventional 2	Lecture Hall
<i>Coffee Break</i>	Lobby
Poster Session	Lobby
Reservoir Characterization 1	Lecture Hall
<i>Coffee Break</i>	Lobby
Reservoir Characterization 2	Lecture Hall
General meeting	Lecture Hall
<i>20th anniversary reception (icebreaking party)</i> <i>(Transportation to the Hotel New Ohtani will be provided.)</i>	Hotel New Ohtani

Thursday, October 2

<i>Slide Center</i>	Entrance Hall
New Technology / EOR / CCS	Lecture Hall
<i>Coffee Break</i>	Lobby
General Formation Evaluation	Lecture Hall
<i>Lunch</i>	Cafeteria
Scientific Drilling / LWD 1	Lecture Hall
<i>Coffee Break</i>	Lobby
LWD 2	Lecture Hall
<i>Coffee Break</i>	Lobby
Well Test	Lecture Hall
<i>Closing</i>	Lecture Hall

Technical Session: Wednesday, October 1

Opening Session

Chairperson: Tatsuki Endo (Schlumberger)

- 9:30** **Opening Address:** Kazuhiko Tezuka (President of JFES, JAPEx)
- 9:40** **Keynote Address from SPWLA: An Integrated Workflow for the Development of Unconventional Resources**
Thaimar Ramirez (President-elect of SPWLA, Apache)

Special Session: Unconventional 1

Chairperson: Masashi Fujiwara (MOECO)

- 10:20** **Invited Talk1: Methane Hydrates: A Path toward a Real Resource**
Koji Yamamoto, JOGMEC
- 10:50** **Invited Talk2: Canadian Oil Sands: Technical Challenges in SAGD Project**
Hiroyuki Nakagawa, JAPEx
- 11:20** **A Global Cross Application of Shale Gas Development Work Flows Revealed:**
Shim Yen Han, Jeffrey Kok, Jack Zhao (Schlumberger)
- 11:40** **B Towards Transformation of Nigerian Heavy Oil/Bitumen into Environmentally Attractive and Market Competitive Fuel – A Focus on Emulsification Technology for Pipeline Transportation:** Alade Olalekan Saheed, Kyuro Sasaki, Yuichi Sugai (Kyushu University), Bayo Ademodi (Obafemi Awolowo University)
- 12:00-13:15** **Lunch**

Special Session: Unconventional 2

Chairperson: Kazuhiro Takahashi (JAPEx)

- 13:15** **C Improvement of Water Saturation Prediction from Log-derived Models in Tight Gas Sandstones -A Case Study:** Amirshahriar Rostami (Pars Oil & Gas Company)
Morteza Amiri (University Technology Malaysia), Amir Hatampour, Farokh Alikhani (Pars Oil & Gas Company)
- 13:35** **D A New Approach for Permeability Calculation using NMR Logs in Tight Formations:**
Jianwei Di, Jerry L. Jensen (University of Calgary, Canada)
- 13:55** **E Petrophysical Analysis on a Tight Siltstone Reservoir:** Takashi Akai (JOGMEC), James Wood (Encana Corporation)
- 14:15** **F Miscible Gas Assisted Gravity Drainage (GAGD) Process to Enhance Oil Recovery in Unconventional Shale Oil Reservoirs:** Watheq Al-Mudhafar (Louisiana State University)
- 14:35-14:45** **Coffee Break**

Poster Session

Coordinator: Osamu Osawa (Schlumberger)

14:45 Brief introduction by authors in front of their poster at Lobby

Reservoir Characterization

Chairperson: Masanori Kurihara (Waseda University)

- 15:25 G Relative Permeability Curves for Gas-Liquid Two-Phase Flows through Rock Fractures:**
Takuma Kikuchi, Noriaki Watanabe, Noriyoshi Tsuchiya (Tohoku University),
Keisuke Sakurai (INPEX), Takuya Ishibashi (AIST)
- 15:45 H Modeling of Three Dimensional Channeling Flow within the Yufutsu Oil/Gas Field:**
Takuya Ishibashi (AIST), Noriaki Watanabe, Noriyoshi Tsuchiya (Tohoku University),
Tetsuya Tamagawa (Japan Petroleum Exploration Co., Ltd)
- 16:05 I Near-Wellbore Acoustic Characterization in Cased Hole for Production Optimization:**
Mitsuko Kitazawa, Bikash K. Sinha, Henri-Pierre Valero, Takeshi Endo,
Shin'ichi Sunaga (Schlumberger)
- 16:25 J Improvement of Accuracy for Estimating Reservoir Properties by Markov-Bayes Method using Two Soft Data:**
Lingdan Xia, Masanori Kurihara (Waseda University)
- 16:45-17:05 General Meeting**
- 18:30-20:30 20th anniversary reception**

Technical Session: Thursday, October 2

New Technology / EOR / CCS

Chairperson: Hideo Komatsu (INPEX)

- 9:20 K Gas Solubility and Acidity Effects on Heavy Oil Recovery at Reservoir Conditions:**
Ronald, Nguele, Kyuro, Sasaki, Yuichi, Sugai (Kyushu University)
Hikmat, Said Al-Salim (UCSI University)
- 9:40 L Evaluation of the Uncertainty and the Risk of CO₂ Storage by the Stochastic Modeling with Aids of Seismic and Well Data:**
Chisato Konishi, Masao Ohoka, Seiichi Ikeda (OYO Corporation), Masato Takagi
(Research Institute of Innovative Technology for the Earth)
- 10:00 M Advances in Wireline-Conveyed In-Situ Fluid Analysis:**
Younes Jalali, Yoko Morita, Kamal Kader (Schlumberger)
- 10:20-10:40 Coffee Break**

General Formation Evaluation

Chairperson: Hisao Ito (Independent Scientist)

- 10:40 N An Innovative Formation Evaluation Approach Applying Effective Pore Space Concept and Adaptive Well Log Interpretation:**
Mohammad Nooraiepour, Kazimir V. Kovalenko, Dmitry A. Kozhevnikov
(Gubkin Russian State University of Oil and Gas)
- 11:00 O X-Ray CT based Numerical Analysis for Fluid Flows through Vuggy Carbonate Cores:**
Hikaru Kusanagi, Noriaki Watanabe, Takeshi Komai, Noriyoshi Tsuchiya (Tohoku University), Takashi Shimizu, Masahiko Yagi (JAPEx)
- 11:20 P The New Direction in Formation Evaluation using Multifunction Evaluation Platform Measurements While Drilling: Deepwater Case Studies:**
Ana Peternell (Schlumberger)
- 11:40 Q The Assessments of Lithofacies and Depositional Environments of the Ngrayong Formation in the Madura Island, North East Java Basin, Indonesia: Implication for Reservoir Characteristics:**
Paike Htwe, Kyuro Sasaki, Sugeng Sapto Surjono, Donatus Hendra Amijaya
(Kyushu University)
- 12:00-13:15 Lunch**

Scientific Drilling / LWD 1

Chairperson: Koji Kusaka (Schlumberger)

- 13:15 R Borehole Instability Analysis for IODP Expedition 338 of the NanTroSEIZE Project, Nankai Trough Subduction Zone:**
Hung-Yu Wu, Masataka Kinoshita, Saneatsu Saito, Wei Ren Lin, Moe KyawThu (JAMSTEC)
- 13:35 S Reliability Indication of Quantitative Cement Evaluation with LWD Sonic:**
Shin'ichi Watanabe, Wataru Izuhara, Vivian Pistre, Hiroaki Yamamoto (Schlumberger)
- 13:55 T Are The LWD Resistivity Logs Telling The Whole Story?:**
Nur Fatimah M Zulkifli, Ko Ko Kyi (PETRONAS Carigali Sdn. Bhd.)
- 14:15-14:30 Coffee Break**

LWD 2

Chairperson: Kunihiro Tsuchida (JOGMEC)

- 14:30 U Discovering Overlooked Pay in Complex Sand Reservoirs: LWD-Based Petrophysical Analysis with an Alaska Example:**
Doug Hupp, Matthew Blyth (Schlumberger), Radu Girbacea (Hilcorp Alaska LLC)
- 14:50 V Optimized Well Design and Real-Time Stratigraphic Positioning of the Wellbore in an Unconventional Reservoir:**
Ilhan Akbar, Doug Gilmour, Robert Innes (Paradigm Geophysical Ltd)
- 15:10 W Fracture, Texture and Saturation Analysis from High Resolution LWD Images and Resistivity:**
Doug Murray, Benamer Djamila (Schlumberger), Parmanand Thakur (ADCO)
- 15:30-15:50 Coffee Break**

Well Test

Chairperson: Hiroshi Asanuma (AIST)

- 15:50 X Dynamic Carbonate Reservoir Characterization using Reservoir Formation Testing and Production Logging Data Integration to Optimize Reservoir:**
Irina Baca Espinoza, Mahmoud Mudi Ibrahim (Baker Hughes Inc.), Omar Saadawi, Alexey Tveritnev (ADCO)
- 16:10 Y Efficient Formation Testing and Data Interpretation with Advanced Probes and In-Situ Fluid Properties Evaluation:**
Khong Chee Kin, Jay Dunlap, Cosan Ayan (Schlumberger), Anna Robinson, Gary Mark Ostroff, Soren Frank (Maersk Oil)
- 16:30-16:45 Closing**

Poster

- AA Comparative Applied Multivariate Geostatistical Algorithms for Formation Permeability Modeling:**
Watheq Al-Mudhafar (Louisiana State University)
- BB Application of Progressive Quasistatic (PQS) Algorithm in Prediction of Water Saturation in Tight Gas Sandstones -A Case Study:**
Morteza Amiri (University Technology Malaysia), Alireza Salamati, Amir Hatampour, Amirshahriar Rostami, Mehdi Heidari (Pars Oil & Gas Company)
- CC Developing a Committee Machine Model for Predicting Reservoir Porosity from Image Analysis of Thin Sections:**
Amirshahriar Rostami, Amir Hatampour, Morteza Amiri, Farokh Alikhani (Pars Oil & Gas Company), Javad Ghiasi-Freez (Iranian Central Oil Fields Company)
- DD New Developments and Feasibility Range for Electrical Caliper from Conventional LWD Resistivity Measurements: Deepwater Offshore Case Studies:**
Ana Peterzell, Keli Sun (Schlumberger)
- EE Probabilistic Geological Model for SAGD Process Built along with Depositional Concept:**
Takashi Tsuji, Koji Kashihara, Koji Kawada, Shinjiro Kuroki, Satoko Watanabe (JAPEX)
Kinya Okada (JGI, Inc.)

Symposium Committee 2014

Chairman	Kazuhiko Tezuka, JAPEx
Vice-Chairman/Program	Tatsuki Endo, Schlumberger K.K.
Finance	Kunihiro Tsuchida, JOGMEC
Printing/Proceedings	Hideo Komatsu, INPEX
Sponsor	Masashi Fujiwara, Mitsui Oil Exploration Co., Ltd.
Technical Arrangement	Koji Kusaka, Schlumberger K.K.
Int'l Coordination	Osamu Osawa, Schlumberger K.K.
Convention Facilities	Kazuhiro Takahashi, JAPEx
Award/Gift	Tatsuya Sato, Geothermal Energy R & D Co., Ltd.
Entertainment	Masato Nakadai, Geophysical Surveying Co., Ltd
Review	Hideki Saito, OYO Corporation
Review	Hisao Ito, Independent Scientist
Review	Nobuhiro Fujiki, Chiyoda Corporation
Review	Hiroshi Asanuma, AIST
Review	Masanori Kurihara, Waseda University
Review	Takeo Aoyama, JX Nippon Oil & Gas Exploration
Registration	Yumi Harada, Schlumberger K.K.
Registration	Kanako Furuto, JAPEx

Corresponding Address:

Yumi Harada

Schlumberger K.K.

2-2-1 Fuchinobe, Chuo, Sagamihara, Kanagawa 252-0206, Japan

Tel: +81 (42) 759 2113

e-mail: YHarada@slb.com

Formation Evaluation Symposium of Japan

JFES

The 20th Anniversary Party

1st October, 2014, 18:30 - 20:30

At Hotel New Otani Makuhari

Sponsored by

JAPEX

INPEX

CTC
Challenging Tomorrow's Changes

MOECO

Schlumberger

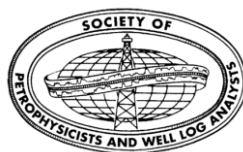
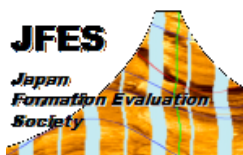
JX JX日鉱日石開発

Apache
EXPLORING WHAT'S POSSIBLE

GERD



Mitsubishi Corporation Exploration



Special Event
Smooth Jazz and Pops
by U:kahoric

Uko(sax)
大橋祐子(pf)
日毛かほり(per)



Registration Information

REGISTRATION FEE

	Pre-Registration (by Sep. 18)	On Site Registration
Member or Speaker	6,000 yen	7,000 yen
Non-member	7,000 yen	8,000 yen
Student	free	1,000 yen

Registration fee entitles a delegate to:

- Proceedings
- Technical program

HOW TO REGISTER

The enclosed Pre-Registration Form must be returned to :

Yumi Harada
Schlumberger K.K.
2-2-1 Fuchinobe, Chuo, Sagamihara, Kanagawa 252-0206, Japan
Tel: +81 (42) 759 2113
e-mail: YHarada@slb.com

The Deadline for the receipt of the **Pre-Registration** Form will be **September 18, 2014**.

No prior proof of payment is necessary. If any change in your registration is necessary, it must be made in writing to the above address no later than September 19. No changes or cancellations can be made by telephone. Any registration after September 19 is requested to be made on site.

HOW TO PAY

All payments should be made on site by cash in Japanese Yen.

No check or credit card will be accepted.

Speaker Information

All speakers are asked to make pre-registration by **August 29, 2014**.

LCD projector is available. All speakers who use LCD are asked to carry their Power Point files by CD ROM or USB memory and register them in the Slide Center corner at their earliest of convenience.

Each oral presentation is allocated 20 minutes including question and discussion. Presentation should be made in English.

General Information

DATE: Wednesday, October 1, and Thursday, October 2, 2014
VENUE: Technology & Research Center (TRC)
Japan Oil, Gas and Metals National Corporation (JOGMEC)
1-2-2, Hamada, Mihama-ku, Chiba 261-0025, Japan
Tel: +81 (43) 276 9212

HOW TO GET TO THE JOGMEC-TRC:

From Makuhari-Hongo Station (JR Sobu Line; 40 min from Tokyo station)

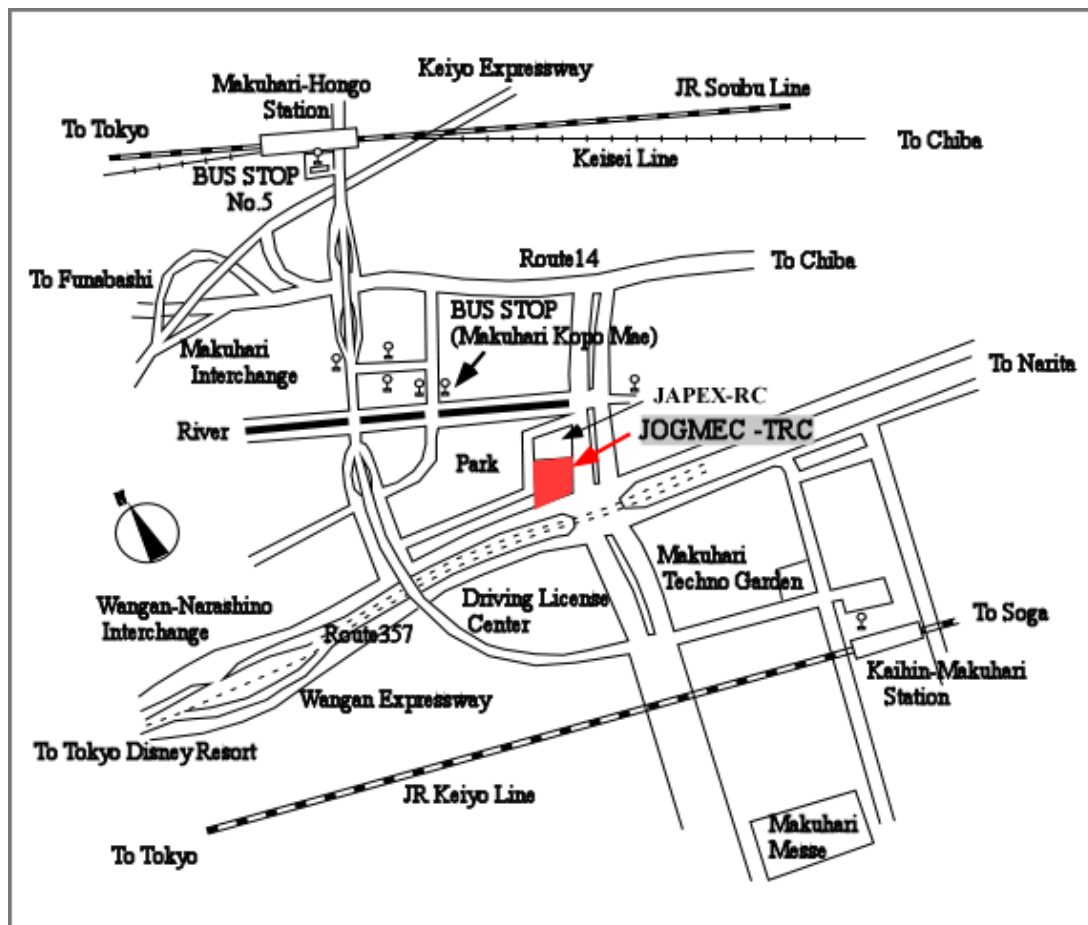
- 10 min. by taxi or 30 min. on foot
- 10 min. by City bus (see below map and bus schedule)

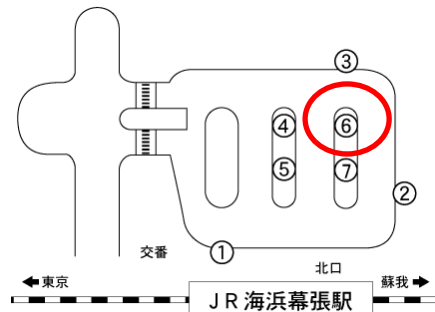
From Kaihin-Makuhari Station (JR Keiyo Line; 30 min. from Tokyo station)

- 10 min. by taxi or 20 min. on foot
- 10 min. by City bus (see below map and bus schedule)

City Bus Service

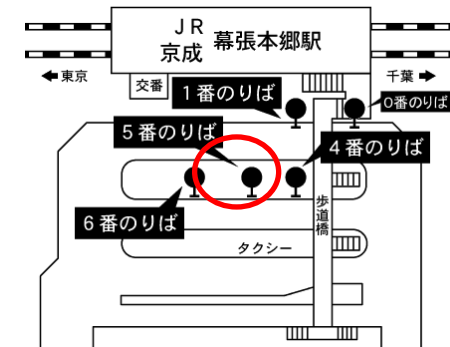
City bus services are available from Makuhari-Hongo Station and Kaihin Makuhari Station. Please refer to the bus schedule in the next page. The fare is **170yen**. There are several bus lines between Makuhari-Hongo Station and Kaihin Makuhari station. Please take “Columbus City Line” and get off at “Sekiyu Kaihatsu Gijyutsu Center”.





Keisei Bus Schedule

-Columbus City Line-



海浜幕張駅発
Kaihin Makuhari-Station

幕張本郷駅行き (#22) For Makuhari Hongo-Station	
	平日 (Week day)
6	35 50
7	05 20 35 50
8	05 20 38 55
9	08 29 48
10	08 28 48
11	08 28 48
12	08 28 48
13	08 28 48
14	08 28 48
15	08 28 48
16	08 28 48
17	08 28 48
18	05 18 38 55
19	07 28 45 58
20	17 33 45
21	00 18 30 45
22	



石油開発技術センター
Sekiyu Kaihatsu Gijyutsu-Center
(JOGMEC-TRC)

幕張本郷駅行き (#22, #32) For Makuhari Hongo-Station		海浜幕張駅行き (#22) For Kaihin Makuhari-Station
平日 (Week day)		平日 (Week day)
06 23 43 58	6	17 47
13 28 34 43 58	7	07 22 34 52
13 28 46	8	07 22 37 52
03 16 37 56	9	09 25 45
16 31 36 45 56	10	05 25 45
00 15 16 31 36 45 56	11	05 25 45
00 15 16 30 36 45 56	12	05 25 45
00 15 16 30 36 45 56	13	05 25 45
00 15 16 30 36 45 56	14	05 25 45
00 15 16 30 36 45 56	15	05 25 45
00 11 16 26 36 40 56 56	16	05 25 45
11 16 26 36 40 56	17	05 25 45
06 13 26 26 41 46	18	00 20 37 50
03 13 15 36 43 53	19	10 27 40 59
06 08 25 38 41 53	20	15 29 46
08 08 26 38 38 53	21	03 15 30
	22	



幕張本郷駅発
Makuharihongo-Station

海浜幕張駅行き (#22) For Kaihin Makuhari-Station	
	平日 (Week day)
6	10 40
7	00 15 27 45
8	00 15 30 45
9	02 18 38 58
10	18 38 58
11	18 38 58
12	18 38 58
13	18 38 58
14	18 38 58
15	18 38 58
16	18 38 58
17	18 38 53
18	13 30 43
19	03 20 33 52
20	08 22 39 56
21	08 23
22	

Accommodation and other travel arrangement

Should you require any assistance for visa and other travel arrangement during the Symposium at JOGMEC-TRC Makuhari, please contact JFES Secretary at the following address by E-mail:

Kinuko Yanagi

Schlumberger K.K.

2-2-1 Fuchinobe, Chuo, Sagamihara, Kanagawa 252-0206, Japan

Tel: +81 (42) 759 5703

e-mail: KYanagi@slb.com

*Please check required days for the visa application to the embassy of your location.
In order to make proper arrangement, please send your request no later than **August 22**.

Land Transportation

For foreign visitors, limousine bus service is the most convenient from Narita Airport to the hotel. Please go to the orange colored "Friendly Airport Limousine Bus" booths, and get on the bus that goes to your hotel. "Keisei Bus" goes to Makuhari area. The cost of the bus will be around 2,400 – 3,000 yen depending on the destination.

Taxi to the hotel around Makuhari area is more than 10,000 yen. The taxi to the center of Tokyo will cost around 30,000 yen.

"Meet & Assist Service" is available on request. The request should be made at least 2 weeks in advance. It will cost about 12,000 yen or more additionally depending on the type of service of your request.

Accommodation

Some examples of the hotels in Makuhari and Tokyo area are listed below and available at your choice. The actual price will be available once the final itinerary is presented and confirmed. To make the reservations, please contact directly to the hotels.

Makuhari Area

20 min. walk to JOGMEC-TRC or 10 min. by taxi

JFES Room Rates are available at **Hotel the Manhattan**.

Please visit to the following URL for making the reservations.

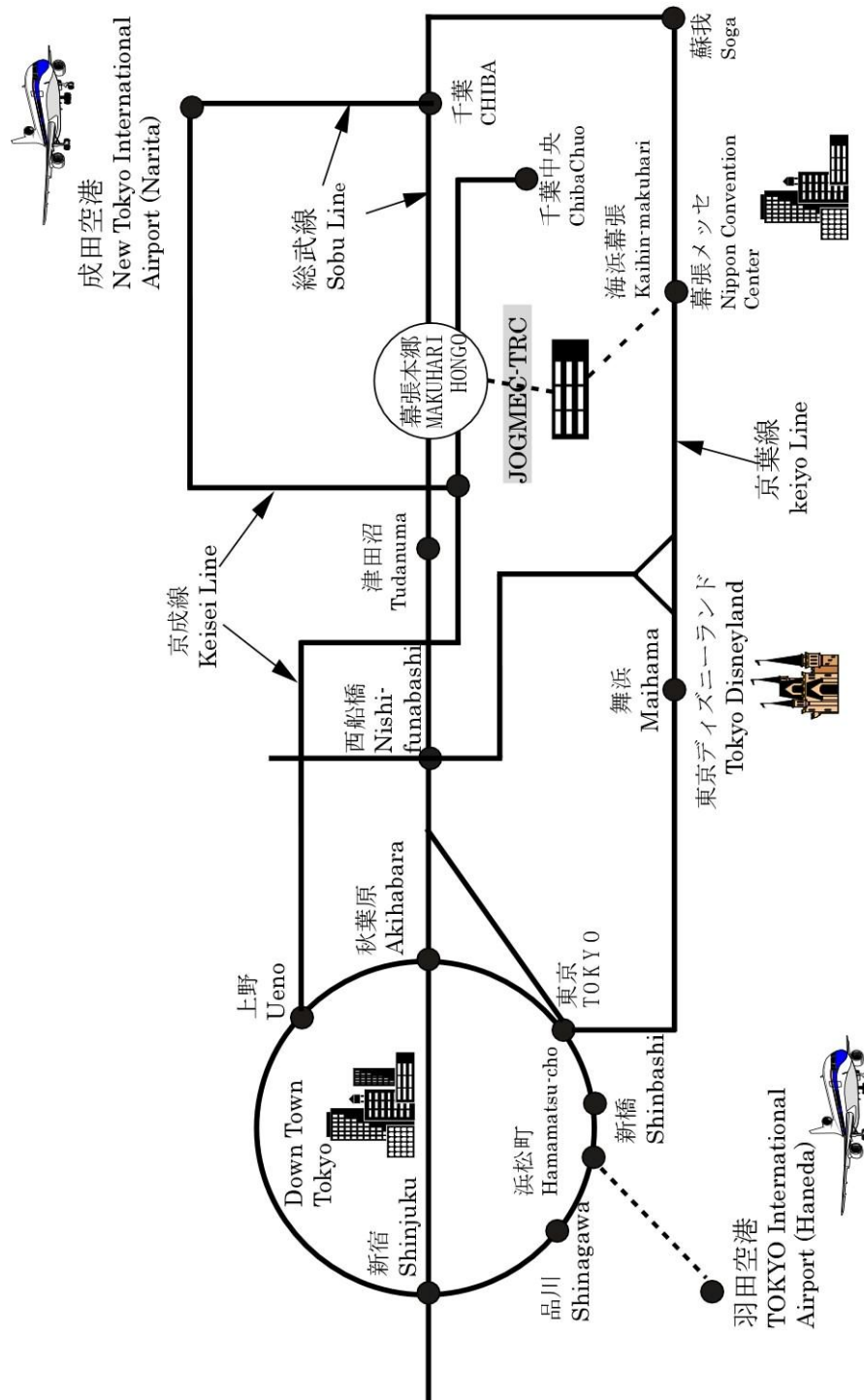
<https://asp.hotel-story.ne.jp/ver3d/plan.asp?p=A1ZRG&c1=05372&c2=001>

- Hotel the Manhattan US\$145 ~
(<http://www.the-manhattan.co.jp/english/>)
- Hotel Springs Makuhari US\$120 ~
(<http://springs.co.jp/english/index.html>)
- APA Hotel & Resort Tokyo Bay Makuhari US\$100 ~
(<http://www.tokyobay-makuhari.com/english/index.html>)

Tokyo area

40 min. to Makuhari Hongo (via Sobu Rapid Train Service) then JOGMEC-TRC bus to Symposium

- Shinagawa Prince Hotel US\$ 125 ~
(<http://www.princehotelsjapan.com/shinagawaprinchotel/>)
- Mércure Hotel Ginza Tokyo US\$ 125 ~
(http://www.mercure.com/mercure/fichehotel/gb/mer/5701/fiche_hotel.shtml)



The 20th Formation Evaluation Symposium of Japan

JOGMEC-TRC, Chiba, Japan, October 1 - 2, 2014

Pre-Registration Form

Name: _____

☐ SPWLA Member

☐ Non-Member

☐ Speaker

☐ JOGMEC-TRC / Student

Institute or Company: _____

Mailing address: _____

Tel: _____ Fax: _____

e-mail: _____

Fee

Registration:

Member or Speaker

☐ 6,000 yen

Non-Member

☐ 7,000 yen

Student

☐ free

Total _____ yen

Please circle: Oct 1st / Oct 2nd / Icebreaking party

Signature: _____

Note: Registration fee includes icebreaking party fee.

Please return this form complete by **September 18, 2014** to;

Yumi Harada

Schlumberger K.K.

2-2-1 Fuchinobe, Chuo, Sagamihara, Kanagawa 252-0206, Japan

Tel: +81 (42) 759 2113

e-mail: YHarada@slb.com