

The 27th Formation Evaluation Symposium of Japan, 2022

Hybrid Meeting - JOGMEC-TRC & Online

14th – 15th September 2022

9:00- Japan Standard Time (GMT+9:00) Each Day

Special Session: **Geothermal**



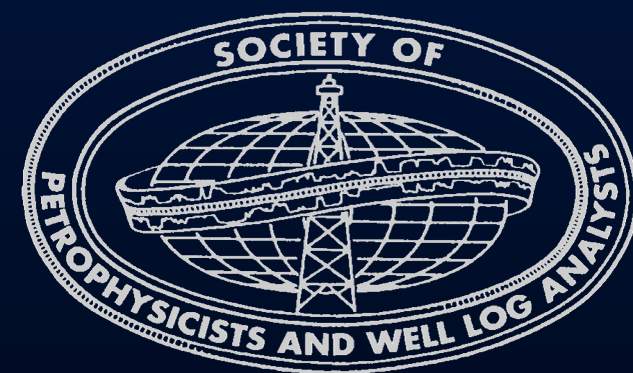
The Sarulla Geothermal Independent Power Producer (IPP) Project, the world's largest single-contract geothermal power project.
- the Sarulla area of Indonesia's North Sumatra Province- (<https://www.inpex.co.jp/english/business/renewable/>)

Sponsored
Cosponsored
Supported

by Japan Formation Evaluation Society (JFES) – A Chapter of SPWLA
by Japan Oil, Gas and Metals National Corporation (JOGMEC)
by Geothermal Research Society of Japan
Japanese Association for Petroleum Technology
Society of Exploration Geophysicists of Japan
Society of Petroleum Engineers, Japan Section



<https://www.spwla-jfes.org/>
info@spwla-jfes.org



 **aspentech**
Subsurface Science & Engineering

HALLIBURTON

INPEX

JAPEX

 **JX Nippon Oil & Gas Exploration**

Schlumberger

GERD



MOECO

OYO
oyo corporation

Invited Talks!! : **Geothermal**

----- Day1: Invited Talk 1 & 2 -----



1-1. **Dr. Carolyn Seto** (IHS Boston),
Pathways for advancing geothermal deployment.



1-2. **Prof. Roland N. Horne** (Stanford Univ.),
Geothermal Electricity in a High Renewable Grid.



2-1. **Pres. Andrea Blair** (International Geothermal Association),
The geothermal future.



2-2. **Dr. Kasumi Yasukawa**
(Geothermal Unit, JOGMEC &
Chair, IEA Geothermal Implementation Agreement),
Geothermal Development and Environment -Studies in Japan and around-.

----- Day:2 Invited Talk 3 & 4 -----



3-1. **Mr. Peter Bauman** (Eavor),
Formation Evaluation of Deep Reservoirs for Closed-loop
Geothermal Development, examples from North America



3-2. **Pres. Paul von Hirtz** (Thermochem),
Development of High-Temperature Logging Tools
for Multi-Phase Wellbore Sampling, PTS and in-situ pH-Measurements.



4-1. **Ms. Finna Christi Lingkan** (INPEX Corporation),
Geothermal Development between Japan and Indonesia.



4-2. **Dr. Hiroshi Asanuma**
(Fukushima Renewable Energy Institute, AIST),
Outline of research on supercritical geothermal power generation.

The 27th
Formation Evaluation Symposium of Japan, 2022

SPONSORS

 **aspentech** | Subsurface Science & Engineering

HALLIBURTON

INPEX **JAPEX**

 **JX Nippon Oil & Gas Exploration**

Schlumberger



GERD



MOECO

OYO
oyo corporation

Thank you

#JFES