

The 30th Formation Evaluation Symposium of Japan **GEOMODELLING WORKSHOP**

Reservoir models are vital to the energy industry to predict the subsurface in the most accurate way. In 2025, despite all the technological advancements and the emergence of AI powered workflows, building reservoir models still rely on the integration of multiple sourced data including formation evaluation logs, seismic data and geological concepts supported by solid surface analogue.

This year, the Japan formation Evaluation society decided to include a one-day geomodelling oriented workshop at the crossroad between the industry and the academic domains.

The objective of the workshop is to explore how formation evaluation data are used to build reservoir models for conventional oil and gas, CCS purpose and new energies.

Join us for a one day workshop enriched by 10 technical talks and 5 student talks highlighting the best practices through worldwide case studies from the Japanese energy companies.

In addition, a panel session will be organized where Japan based most senior experts will share their vision and direction on reservoir modelling .

Geomodelling workshop:08 October 2025

JFES Symposium: 09-10 October 2025

Chair

Program Committee

Raffik Lazar

GeomodL International

Yuki Maehara

SLB

Kengo Tsuzuki

Eneos Xplora

Tomomi Ninomiya

SLB

Machiko Tamaki

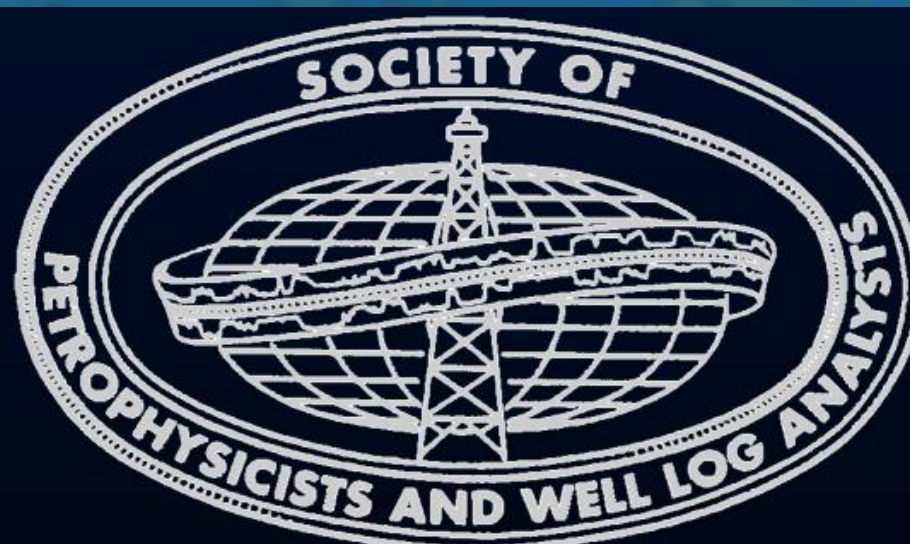
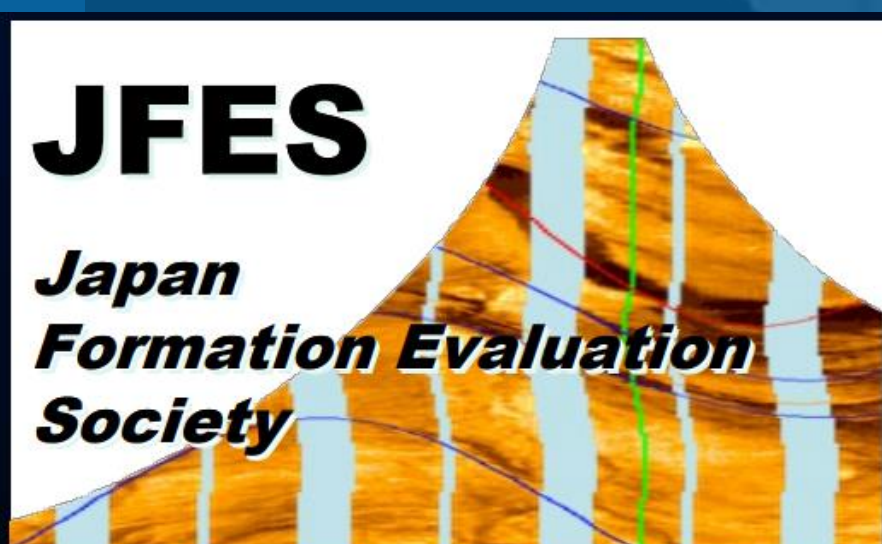
Japan Oil Engineering

Yuri Kanai

SLB

Taisuke Mizunaga

Mitsui Oil Exploration



08-09-10 October 25, JOGMEC TRC, Chiba-Japan

Formore information, please contact: info@spwla-jfes.org

The 30th Formation Evaluation

Symposium of Japan

GEOMODELLING WORKSHOP **Call for abstract submission**

The 30th JFES Geomodelling workshop brings together industry and academic experts. This event is the perfect platform to:

- Develop insights in the reservoir modelling Japan scene
- Understand current reservoir modelling challenges faced by the main Japanese energy companies
- Connect with the Japan based reservoir modelling community
- Have rich technical discussions and collaborate with your peers to contribute to the future of reservoir modelling in Japan

If you have a strong case study showcasing the usage of formation evaluation data to reach superior reservoir modelling results, please consider submitting an abstract (300 – 600 words) for the following topics:

- (un)conventional oil and gas reservoir modelling for both clastics / carbonates inside and outside Japan
- Carbone Capture and Storage reservoir modelling practices
- Geothermal and other new energies reservoir modelling latest updates
- Geomechanical recent advancements

Submit your abstract

<https://forms.office.com/r/c0vXYkF13m>

Important dates

08 May 2025: Call for abstract OPEN

31 May 2025: Call for abstract CLOSE

Sponsorship will be available for student

08-09-10 October 25, JOGMEC TRC, Chiba-Japan

Formore information, please contact: info@spwla-jfes.org