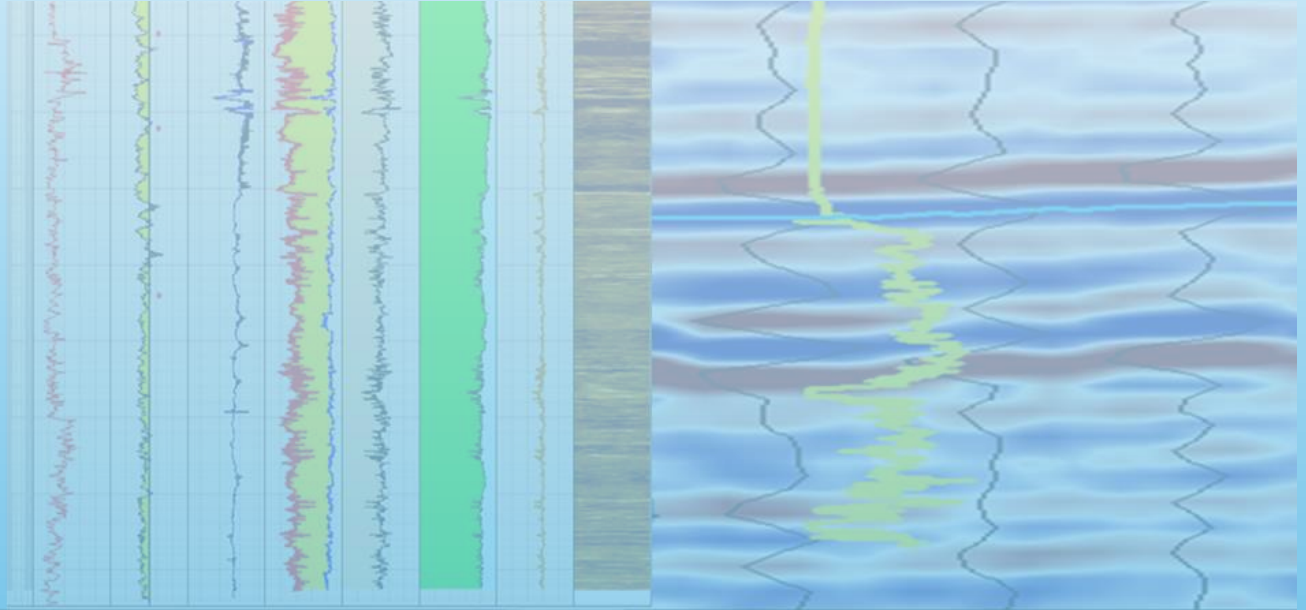


The 30th Formation Evaluation

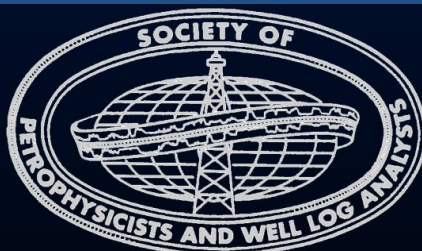
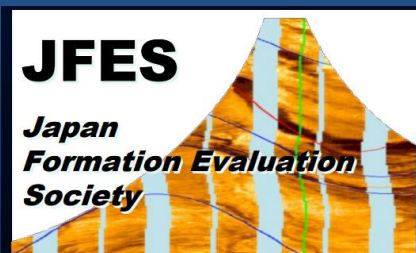
Symposium of Japan

GEOMODELLING WORKSHOP



08 October 2025
JOGMEC TRC, Chiba – Japan

PROGRAMME



WELCOME TO JAPAN!

日本によろこそ!

JFES30 Geomodelling workshop 2025

In October, the Japan Formation Evaluation Symposium will be back. This year, JFES expands its reach beyond formation evaluation to include a one-day reservoir modelling workshop.

“Reservoir models are vital to the energy industry to predict the subsurface in the most accurate way. In 2025, despite all the technological advancements and the emergence of AI powered workflows, building reservoir models still relies on the integration of multiple sourced data including formation evaluation logs, seismic data and geological concepts supported by solid surface analogue.

Together with the workshop subcommittee, we have worked very hard to prepare an exciting program comprising high class reservoir modelling case studies, new technology / innovative tool talks and a panel session where local SMEs will share their views on the reservoir modelling direction and trends.

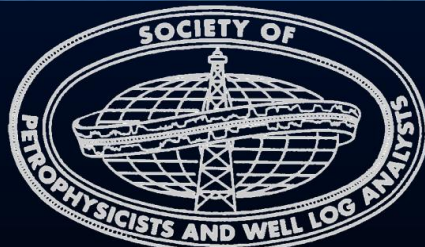
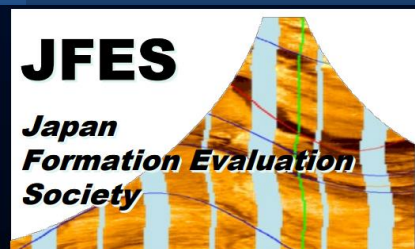
The objective of the workshop is to explore how formation evaluation data are used to build reservoir models for conventional oil and gas, CCS purpose and new energies.

Join us for the one-day workshop to discuss the best practices through worldwide case studies from the Japanese energy companies.”

Raffik Lazar

GeomodL International / The Dubai Dataroom

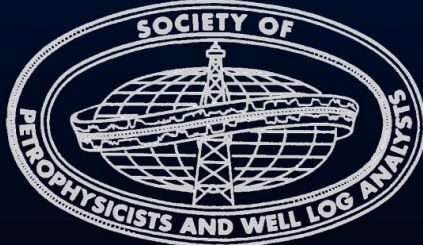
JFES30 Geomodelling workshop chair



Program

The information is accurate as of 15 September 2025. Minor modifications might happen.

JOGMEC TRC plenary hall	8:30	Registration Open
Raffik Lazar – GeomodL International	9:15	Opening address: reservoir modelling past, future and present
Panel session: moderated by Tomomi Ninomiya and Yuri Kanai		
Kazuyuki Yamamoto – INPEX Shota Yamashita – Eneos Xplora Tomonori Hasegawa – JAPEX Kosuke Egawa – Kyushu University	9:30	Reservoir modelling industry expert panel session
State of the Art static geomodelling session chaired by Kengo Tsuzuki and Tomomi Ninomiya		
Satoshi Noguchi – Idemitsu Kosan	11:15	Reconstructing Reservoir Architecture in the Pattani Basin: A High-Resolution Reservoir Static Model of Fluvial Channels
Hiroki Montani – ADNOC / INPEX	11:45	Modelling Residual Oil Below Current Free Water Level Using Paleo FWL and Saturation Height Functions in a Giant Carbonate Brown Field, Offshore Abu Dhabi
Masaaki Okita – Eneos Xplora	12:15	A successful geomodel study applying grain size-based rock type with diagenetic clay variation
JOGMEC TRC cafeteria	12:45	Lunch break
Innovative modelling tools / workflows session chaired by Kengo Tsuzuki and Machiko Tamaki		
Fergus Sinclair – Ikonsciences	14:00	Facies First: A New Paradigm for Seismic-Constrained Geomodels
Tomomi Ninomiya – SLB	14:30	Geological Process Modelling/ EMBER
Takahiro Zushi – INPEX	15:00	Machine Learning for reservoir characterization
Koji Kashiwara - JAPEX	15:30	Review of recent geomechanical modeling workflow and modifications for CCS
Academic insights session chaired by Machiko Tamaki and Yuri Kanai		
Koyo Shimura – Waseda University	16:20	Prediction of the FFD particle using physics informed neural networks
Kotaro Yamasaki – Kyushu University	16:50	Integrated evaluation of CO2 storage efficiency and seal performance in the Pleistocene Otadai Formation: core-log analysis and geomodelling of TR-3 well
Masatoshi Nishi – INPEX	17:20	Closing address
JOGMEC TRC – Cafeteria	17:30	Ice breaker JFES30 Symposium



Technical subcommittee

Raffik Lazar (Chair)	GeomodL International
Yuki Maehara	SLB
Kengo Tsuzuki	Eneos Xplora
Machiko Tamaki	Japan Oil Engineering
Tomomi Ninomiya	SLB
Yuri Kanai	SLB
Taisuke Mizunaga	Mitsui Energy Development

More informations



Venue

The JFES30 geomodelling workshop will be held at JOGMEC TRC, in Makuhari, Chiba, Japan.

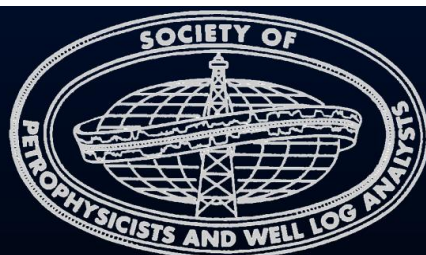
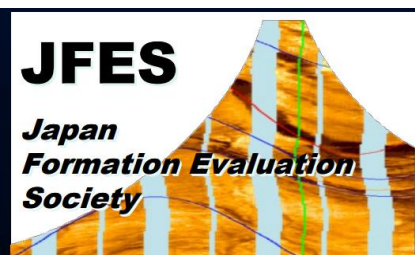
Health and safety

In case of emergency, always follow the instructions given by the venue coordinator

Catering

Coffee/tea breaks are included in the registration fee.

In addition, there will be an ice breaker event after the workshop



Join us

The JFES30 Geomodelling Workshop is part of the JFES symposium. We encourage you to attend both events.

Wednesday 8 October	9:15–17:00	Geomodelling Workshop
Wednesday 8 October	17:30–19:30	JFES Ice breaker (JOGMEC TRC)
Thursday 9 October	9:00 – 17:00	JFES symposium Day 1
Thursday 9 October	18:00– 20:00	Banquet (Manhattan hotel)
Friday 10 October	09:00-16:00	JFES symposium Day 2

For attendees outside of Japan, the workshop will be streamed live online. On registration, a link will be sent before the workshop.

Fees

Geomodelling workshop only (you will not attend symposium):	JPY 8,000
Regular JFES Member Geomodelling workshop + JFES symposium:	JPY 10,000
Regular non-member Geomodelling workshop + JFES symposium:	JPY 13,000

Thanks to our generous sponsors

